



# SCH **Pulse**

FOUNDATION

## DID YOU KNOW?

### EXPANDING ACCESS TO EXPERT ONCOLOGY CARE

SCH will now feature more permanent oncology providers than ever before!

**7** MEDICAL  
ONCOLOGY  
PROVIDERS

**2** RADIATION  
ONCOLOGISTS

**1** SURGICAL  
ONCOLOGIST

**1** BREAST  
SURGEON

This expanded team represents an important milestone in our mission to deliver advanced, compassionate, community-based cancer care—right here in southern Rhode Island.

Learn more at  
[southcountyhealth.org/cancer](https://southcountyhealth.org/cancer)

## STAY CONNECTED

SOUTH COUNTY  
HEALTH

FOUNDATION

401-788-1492

To receive future updates, please email  
[foundation@southcountyhealth.org](mailto:foundation@southcountyhealth.org)



December 2025 | [southcountyhealth.org](https://southcountyhealth.org)



### A COMMITMENT TO ACCESS, A COMMITMENT TO OUR COMMUNITY

At South County Health, we believe access to care is the foundation of a healthy community. In Washington County, where our population is aging, access isn't just important—it's mission-critical. It's how we deliver on our promise to be Rhode Island's Most Trusted Health Partner.

Even the most advanced care can't make a difference if patients can't reach it. While other health systems move treatments out of state, South County Health is committed to keeping care local and close to home. Over the past year, we've focused on expanding access to primary care and women's health—recruiting providers, supporting them, and building strong patient relationships. As a result:

- ✔ 5,000+ patients reassigned to primary care providers
- ✔ 3,000+ new primary care visits booked
- ✔ 1,700+ new OB-GYN visits added

These aren't just numbers—they represent lives touched and healthier futures built, demonstrating our commitment to expanding access even in challenging times.

Our Cancer Center is another powerful example. We recently welcomed back Dr. Gerald Colvin as Medical Director and will soon add three new permanent oncology providers. With 11 permanent specialists across medical, surgical, and radiation oncology—trained at some of the nation's leading cancer programs—our team has grown 60% since 2024, making it the largest in our history.

This winter, we will open a new outpatient cancer clinic at our East Greenwich Medical and Wellness Center, bringing world-class cancer care closer to families in central Rhode Island.

These milestones reflect more than growth—they reflect a promise to our neighbors, friends, and loved ones: that exceptional care will be available when and where it matters most.

And none of this is possible without you. Your generosity supports top-tier cancer care right here in southern Rhode Island. Together, we are building a Cancer Center that not only treats disease but transforms lives, ensuring that everyone who needs care can reach it.

Thank you for standing with us.

**Aaron Robinson**  
President and CEO



# SCH STORIES

## A Gem in South County: Deborah's Journey with Emergency Care

When medical symptoms became unbearable, Deborah Moxham made a decision that would change everything: driving to South County Hospital's Emergency Department. What she experienced there left a lasting impression of compassion, professionalism, and world-class care.

### Swift Diagnosis and Relief

"As my medical symptoms became more extreme, I drove myself to South County Hospital's emergency room. I feel as though my decision was rewarded with astonishing care," Deborah shared.

She was quickly triaged into a room and received intravenous anti-nausea medicine and morphine for what was later confirmed to be a large kidney stone. "I had a scan that confirmed the diagnosis, and I was scheduled for surgery."

### Compassionate Care from Start to Finish

"Gena, who was the nurse who immediately guessed what was wrong with me (I have never had a kidney stone in

my life), was comforting and attentive. The PA for urology came in and explained what my problems were. Another nurse made sure I had a urine sample taken, blood was drawn, and I was transferred to a room."

With her pain and nausea under control, Deborah was able to rest until afternoon surgery with the Urology team. "My physician, John P. Heffernan, MD, FACS, took the time to explain my issues to my family and to me. He was a dream doctor, kind and caring and clearly laying out my situation."

### A Hospital Worth Preserving

Reflecting on her experience, Deborah contrasted it with longer waits at other facilities and shared gratitude for South County Health, "SCH is a gem, a jewel, which is able to provide excellent care in a smaller setting. It is immaculate, well-staffed, and up to date. Everything should be done to preserve this hospital for South County residents or visitors like me who cannot adequately express their appreciation for superb health care." 🍷

**Share your Story!** [southcountyhealth.org/gratitude](https://southcountyhealth.org/gratitude)



## Choose Local. Choose South County Hospital.

### When every minute matters, you deserve expert emergency care close to home.

Under the leadership of Dr. Peter Graves, Chief of Emergency Medicine, Dr. Ryan Hudson, Vice-Chief, and Alyssa Marciniak, RN, Director of Emergency Services, our Emergency Department team is dedicated to delivering exceptional, patient-centered care 24/7. **Learn more about what it's like to visit our ED directly from our patients:**

"As soon as I arrived in the ED, I was **registered immediately** and brought in to see medical personnel. The staff was very professional, polite and considerate."

"This emergency room and hospital **without a doubt is the best in RI.**"

"All of the people doing the tests, sign-in, triage, X-ray, CT scan, blood tests were **as amazing as I have always thought South County Hospital to be.**"



"The emergency room waiting room was calm and orderly even though it was fairly busy. I was seen promptly and cared for very well during my visit.

**I drive 30 minutes to come to this emergency room, even though another one is five minutes from my house, because of the positive environment."**

"Overall, excellent care. I'm from Canada where ED visits are almost unbearable. This was **a breath of fresh air!**"

**Patients who check-in online average just 32 minutes in the ED waiting room!**  
See wait times in real time at [getcare.southcountyhealth.org](https://getcare.southcountyhealth.org)



# SOUTH COUNTY HEALTH ESTABLISHES COMMUNITY ADVISORY COMMITTEE

With the rapidly changing landscape of healthcare, South County Health's Senior Leadership and Board of Trustees recognize, now more than ever, the importance of open communication and understanding the needs of our community.

To deepen that connection, South County Health has established a **Community Advisory Committee** — a dedicated forum to strengthen dialogue between our hospital and the people we serve.

***"Building trust through genuine conversation is essential to delivering healthcare that truly meets our community's needs," said Aaron Robinson, CEO of South County Health.***

## Active Listening in Action

The Community Advisory Committee serves as a vital bridge between SCH and our neighbors. This group of 17 trained volunteer community ambassadors engages in authentic conversations — listening to feedback, addressing concerns, and sharing accurate information about our hospital's services and initiatives.

***"What makes this work is that I'm not speaking for the hospital—I'm listening for the hospital," said Janet Yozura, a committee member and longtime South County resident. "When I hear concerns in my conversations, I know they'll reach leadership. And when the hospital makes decisions, I can explain the 'why' behind them to my neighbors."***

Facilitated by SM Coaching Solutions, a local firm specializing in community engagement and organizational development, the

committee embodies what it means to listen, learn, and respond with empathy. This initiative enhances South County Health's broader communication strategy by creating direct, two-way pathways for community dialogue. Committee members bring real-time insights to hospital leadership, helping inform strategic decisions and operational improvements that shape our future.

When changes occur, ambassadors are briefed so they can answer questions and clarify the "why" for neighbors — strengthening trust through transparency.

Since its launch in June, members have conducted more than 116 conversations across South County — reaching an estimated 250+ residents through direct dialogue and word-of-mouth.

Ambassadors represent diverse perspectives — from retired healthcare professionals and business leaders to volunteers and grateful patients — all united by their commitment to supporting accessible, high-quality healthcare in our region.

## Building for the Future

Inspired by the Community Advisory Committee's success, we're expanding opportunities for residents to shape the future of healthcare in South County. Whether you want to volunteer, serve on a committee, or support our mission through giving, there's a place for you to make a lasting impact on the hospital that serves our neighbors, families, and friends.

***"Building trust takes time, consistency, and genuine commitment," Robinson added. "We're in this for the long haul, and we're grateful to every community member willing to give us the opportunity to earn their confidence."***

To learn more about the Advisory Committee or how to get involved, please email [foundation@southcountyhealth.org](mailto:foundation@southcountyhealth.org)



## EVENTS

### THANKS FOR GOING THE EXTRA MILE FOR BREAST HEALTH!

Thank you to everyone who joined South County Health and The Mews Tavern for this year's Gear 'N' Beer 5K on November 23! Your energy, spirit, and generosity helped advance breast health care in our community — supporting early detection, advanced treatment, and compassionate support for patients and families.

If you weren't able to participate but would still like to help, **please consider making a donation to the Breast Health Center** project by scanning the QR code →



Thank you to the **Vivian J. Palmieri Charitable Trust** for beautifying our Wakefield campus with the gift of a memorial rose garden. Blooming on the south side of the Medical Office Building for patients and visitors to enjoy.

[southcountyhealth.org/ways-to-give](https://southcountyhealth.org/ways-to-give)





# WELCOME OUR NEWEST PROVIDERS

South County Health is proud to welcome new providers. They bring expertise, compassion, and a commitment to keeping care local and accessible. Please join us in welcoming the newest members of our care team.



**Samuel Asamoah, PA-C**  
Primary Care — Narragansett  
Accepting new patients 12+  
p. 401-789-8543



**Rebecca Brierley, PA-C**  
Wound Care  
p. 401-788-1638



**Melynda Craig, PhD, PA-C**  
Express Care  
[getcare.southcountyhealth.org](http://getcare.southcountyhealth.org)



**Thomas Hudson, APRN**  
Express Care  
[getcare.southcountyhealth.org](http://getcare.southcountyhealth.org)



**Brianna Logan, APRN**  
Urology — Wakefield  
p. 401-788-8780



**Priya Patel, MD**  
Nephrology & Hypertension  
Wakefield, Westerly,  
& East Greenwich  
p. 401-782-0090

Meet all of our providers at [southcountyhealth.org/providers](http://southcountyhealth.org/providers)



# EXPANDING ACCESS, ENHANCING LIVES

We're excited to share South County Health's recent and upcoming expansions which represent a pivotal step forward in improving access and outcomes in the communities we serve.



**EAST GREENWICH:** An outpatient **Oncology/Hematology Clinic** will open at our East Greenwich Medical & Wellness Center this winter. Notably, all four of our new oncology providers will have regular hours in East Greenwich, increasing convenience and continuity of care for patients. Additionally, South County Health **Nephrology** has also expanded services to our East Greenwich facility, sharing space with our Primary Care team.



**NEWPORT:** In November, South County Health **Center for Women's Health** began seeing OB-GYN patients at 38 Powel Avenue, Newport.

These initiatives build on a series of strategic investments designed to respond to growing community needs in both primary and specialty care. Together, these expansions reflect our ongoing commitment to ensuring high-quality, accessible care throughout our region.

## AWARDS & MILESTONES

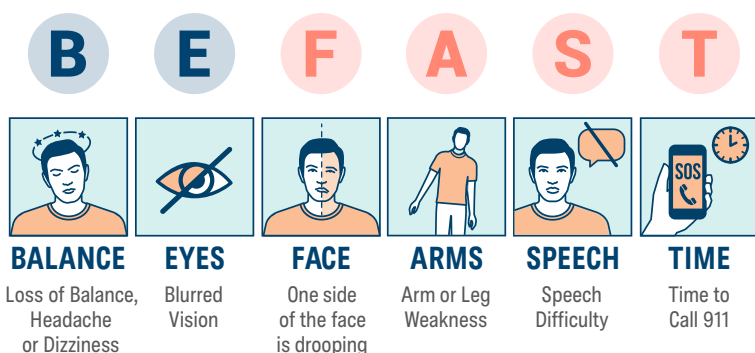
### EXCELLENCE IN STROKE CARE

South County Hospital has earned the American Heart Association's **Get With The Guidelines® – Stroke Bronze Quality Achievement Award**, recognizing our commitment to delivering the highest standard of stroke care.

This national recognition reflects our team's dedication to providing timely, evidence-based treatment that improves outcomes, reduces complications, and saves lives—right here in our community. 🌟



### DO YOU KNOW THE SIGNS OF A STROKE?



### WORKPLACE WELLNESS

South County Health is proud to have been named a **Healthiest Employer in Rhode Island** by *Providence Business News (PBN)*. This prestigious recognition is a testament to South County Health's commitment to promoting the health and well-being of employees.



*Lisa Bernardi and Drew Murphy accept the 2025 Worksite Health award in August*

South County Health was also honored with the **Exemplary Award** as part of the **2025 Worksite Health Awards**, presented by the Greater Providence Chamber of Commerce and Blue Cross & Blue Shield of RI.

This distinction highlights our ongoing commitment to fostering a healthy, supportive workplace for our staff—ensuring they can provide the best care to our community. 🌟 [southcountyhealth.org/news](https://southcountyhealth.org/news)

## STAFF SPOTLIGHT

### A NURSE WHO CHANGED THE COURSE OF A BIRTH

South County Health is proud to honor **Jessica Mailloux, RN**, as a DAISY Award recipient.

**“Jess’s vigilance and dedication meant that our beautiful son is here with us today,”** Center for Women’s Health and Women and Newborn Care Unit patient Alex O’Connor wrote. “Had she not looked deeper into my high blood pressure that day, the outcome could have been so different. Words cannot fully express the gratitude my husband and I feel. We owe so much to Jess and we know she embodies everything the DAISY Award stands for.”

**“Jessica is a shining example of the exceptional nursing care we strive to provide at South County Health,”** says Anitra L. Galtore, DNP, Chief Operations Officer/Chief Nursing Officer. “Her clinical expertise and compassion not only ensured the safety of a mother and baby, but also brought calm and reassurance during a frightening moment. Nurses like Jessica remind us of the profound impact we have on the lives of patients and families.” 🌟



### FROM RECEPTION TO THE OPERATING ROOM

At South County Health, we are proud to invest in our employees' growth—transforming careers and enriching patient care.

**Julia Brockwell's** journey from medical receptionist to Certified Surgical Technologist showcases the impact of education, mentorship, and a supportive workplace. “All the techs at SCH made my internship the best experience during my schooling.

Without them, I would have been lost in surgery,” she says. Through SCH's partnership with CCRI and hands-on learning, Julia gained the skills and confidence to excel in the operating room, reflecting SCH's mission to empower staff and elevate care. 🌟



Read more staff success stories at [southcountyhealth.org/stories](https://southcountyhealth.org/stories)

**Receive news and updates by email!**

*Subscribe to our monthly eNewsletter*

[SouthCountyHealth.org/Subscribe](http://SouthCountyHealth.org/Subscribe)

## Re-imagining Cancer Care — Together

At South County Health, every advancement in care is driven by one goal: to ensure that our community has access to world-class treatment close to home. This fall, we announced the return of Dr. Gerald Colvin as Medical Director, and three more providers to our team of permanent medical oncology specialists.

### Comprehensive & Collaborative Care Across Three Oncology Domains

#### MEDICAL ONCOLOGY



**Gerald Colvin, DO**  
*Medical Director, Oncology*



**Nancy McKinney, MD**



**Griffin Reynolds, MD**



**Christopher Seidler, MD**



**Heather Glenn, FNP**  
*Starting in January*



**Patricia Karwan, DNP**  
*Starting in December*



**Michelle Viveiros, DNP**

**“I’m honored to return to South County Health and to lead this next chapter for our Cancer Center.**

Together with an outstanding team of **11 oncology providers** — many of whom I have had the privilege of working with before — we’ll continue building a program where patients have access to advanced oncology care close to home, supported by compassion every step of the way.”

— Dr. Gerald Colvin, Medical Director

#### RADIATION ONCOLOGY



**Donald Joyce, MD**  
*Medical Director,  
Radiation Therapy*



**James Assif, MD**



**N. Joseph Espat, MD**  
*Surgical Oncology*



**Julia Tassinari, MD**  
*Breast Surgery*

#### SURGICAL ONCOLOGY

**South County Health Cancer Center**

**p. 401-783-6670**

**f. 401-789-4990**