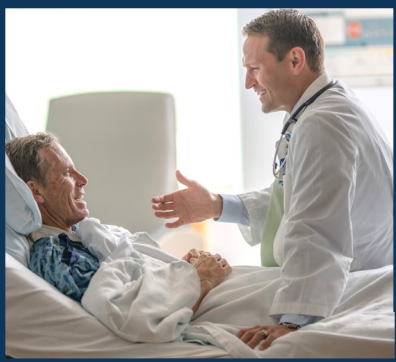


SOUTH COUNTY HEALTH

MOST TRUSTED HEALTH PARTNER



Join our 100+ year tradition of
providing compassionate care in
beautiful coastal Rhode Island!

IN RHODE ISLAND, “THE OCEAN STATE,” YOU GET THE BEST OF BOTH WORLDS

— a growing metropolitan setting alongside quintessential coastal New England. Washington County, commonly called “South County” by locals and visitors, offers numerous beaches, bays and inlets for boating and fishing as well as restaurants, theaters and festivals for entertainment. Its history is rich in tradition and has a diverse culture that is second to none!

AT SOUTH COUNTY
HEALTH, YOU’LL
PRACTICE MEDICINE
JUST MINUTES
FROM OVER

100 miles of
breathtaking
beaches.

2.5 hours to
New York City



90 minutes
to Boston



30 minutes to
Providence or Newport



3 hours to the
White Mountains

25 Minutes to
Rhode Island T.F. Green
International Airport



Discover more of what South County
has to offer at southcountyri.org

Travel +
Leisure's
Best Airport
in the U.S.
2025

One of Rhode Island's most highly-desired communities for raising families.

"A BIG DRAW OF COMING TO SOUTH COUNTY HEALTH WAS THE OPPORTUNITY TO WORK IN THE SAME COMMUNITY WHERE MY FAMILY AND I LIVE."

DR. KEVIN CHARPENTIER
CHIEF MEDICAL OFFICER



✓ TOP RANKED
PUBLIC SCHOOLS

*Adventure
awaits*

SURF. SUN. SAND. & MORE

Experience all that South County has to offer within minutes of our Wakefield campus.



TOP HOSPITAL

SPINE SURGERY

BY CASTLE CONNOLLY

SOUTH COUNTY
HEALTH

SOUTH COUNTY
HEALTH

OUTSTANDING PATIENT EXPERIENCE

HEALTHGRADES

2022-2025



South County Health provides an outstanding environment for delivering quality care, as our national awards and accreditations attest.

TOP 15% NATIONALLY FOR PATIENT EXPERIENCE

With over 100 years of service to southern Rhode Island, South County Health gives you an exceptional opportunity to provide your patients with the best care possible. And isn't that why you got into medicine in the first place?

SYSTEM AT A GLANCE*

20

SERVICE LINES

115

EMPLOYED PROVIDERS

528

MEDICAL STAFF

210K+

OFFICE VISITS

LOCATIONS

- 1 Westerly
- 2 Wakefield
Hospital campus
- 3 Narragansett
- 4 Newport
- 5 East Greenwich
- 6 Warwick

"HAVING WORKED AT SEVERAL OTHER HOSPITALS IN THE STATE, I CAN VERIFY WHAT WE ALL KNOW TO BE TRUE —
SOUTH COUNTY HOSPITAL IS A SPECIAL PLACE."

DR. PETER GRAVES, CHIEF OF EMERGENCY SERVICES

*FY24 Statistics

Get to know our *Leaders*

AARON ROBINSON

PRESIDENT & CEO

"Originally from St. Louis, I began my career in healthcare as a physical therapist. I worked in multiple roles starting in a rehab hospital and then in the acute care environment. I gained experience building service lines for large health systems in Missouri and Florida before coming to Rhode Island with my wife and 3 children to lead the exceptional team of providers, caregivers, and staff at South County Health."



ANITRA GALMORE, DNP, NEA-BC

CHIEF OPERATING OFFICER, CHIEF NURSING OFFICER

"I have been in healthcare for over 30 years. My background is in maternal health – I held multiple leadership roles in OB and Surgical service lines prior to becoming a nurse executive. Originally from St. Louis, I moved to Rhode Island to join the South County Health Executive Leadership Team in 2020. I enjoy living in the community in which I work, and I'm grateful for the opportunity to partner in leading this exceptional health system. It is my honor to serve on the boards of community organizations such as the Johnnycake Center and South Kingstown Housing Authority."



KEVIN P. CHARPENTIER, MD, MBA

CHIEF MEDICAL OFFICER

"I joined the executive leadership team at South County Health in 2022. My background is as a surgeon. I spent the majority of my clinical career performing transplant surgery, as well as liver and pancreatic surgery, frequently working with cancer patients. At South County Health, I have the privilege of seeing patients while holding a leadership position."



MAGGIE THOMAS

CHIEF HUMAN RESOURCES OFFICER

"I joined South County Health as Chief Human Resources Officer over 20 years ago, relocating my family from central Massachusetts to Wakefield, RI. With over 30 years of healthcare HR experience, I had the privilege of working in large academic systems before finding my place at South County. Here, the smaller scale fosters strong connections and agile decision-making, making SCH a great place to work. I've fallen in love with this community's welcoming environment and commitment to excellence. Though my children now live in big cities, they still love returning home to South County's beaches, bike paths, and tight-knit community."



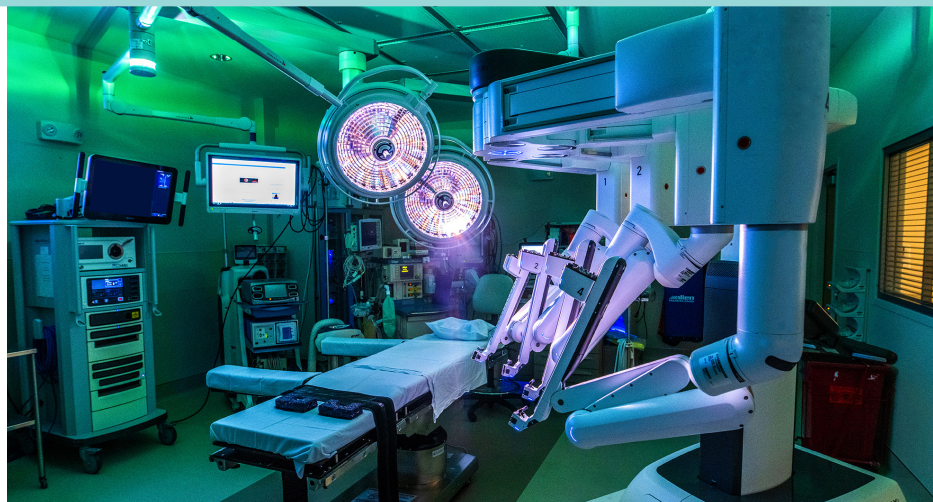
JESSICA MARFEO, MHA, CHL, RN

DIRECTOR, SPECIALTY SERVICES

"I applied to SCH due to its high-quality cancer program. I found it impressive that it was community-funded. The Cancer Center is designed for patients, with dedicated staff providing compassionate care. As someone who went into nursing due to my own experience as a cancer patient, I understand the profound impact the disease can have, not just on the individual, but on their community. I grew up in Southern RI, so to be able to return to work in the community that I was raised is a full circle moment."



"BEING LESS THAN 10 MINUTES FROM THE BEACH IS A PERK. I ENJOY BEING ABLE TO WALK AROUND THE HOSPITAL'S NEIGHBORHOOD AND GRABBING A COFFEE ON MAIN STREET." — JESSICA MARFEO



“SOUTH COUNTY
HEALTH HAS A GREAT
REPUTATION FOR
QUALITY AND PATIENT
CARE. I’M PROUD TO BE
PART OF THE TEAM OF
PHYSICIANS, PROVIDERS
AND CLINICAL
STAFF SERVING THIS
COMMUNITY.”

— ROBERT GIANFROCCO, DO
CHIEF OF PHYSICIAN SERVICES

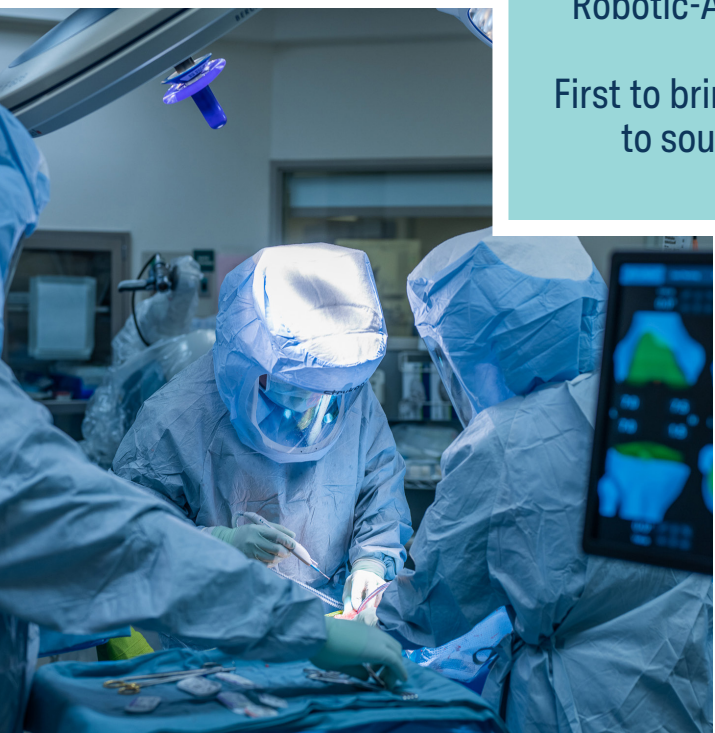
Let innovation
inspire you

7 State-of-the-Art
Operating Rooms

First in Rhode Island
to offer Robotic-Assisted
Joint Replacement

First in Rhode Island
to offer ExcelsiusGPS for
Robotic-Assisted Spine Surgery

First to bring Aquablation Therapy
to southern Rhode Island



WANT TO LEARN MORE?

Contact our Provider Recruitment Team at
PhysicianRecruitment@SouthCountyHealth.org
or call 401-788-2125

SouthCountyHealth.org